



ANKARA DIRECTORATE OF NATIONAL EDUCATION



Erasmus+



Turkey



Ankara is the capital of Turkey located in the middle of Anatolia.



The population of Turkey is about 80 million. Ankara has a population of nearly 5 million.






- Ankara is the second crowded city in Turkey. There are many universities, schools, hospitals, state buildings, commercial and industrial sites .

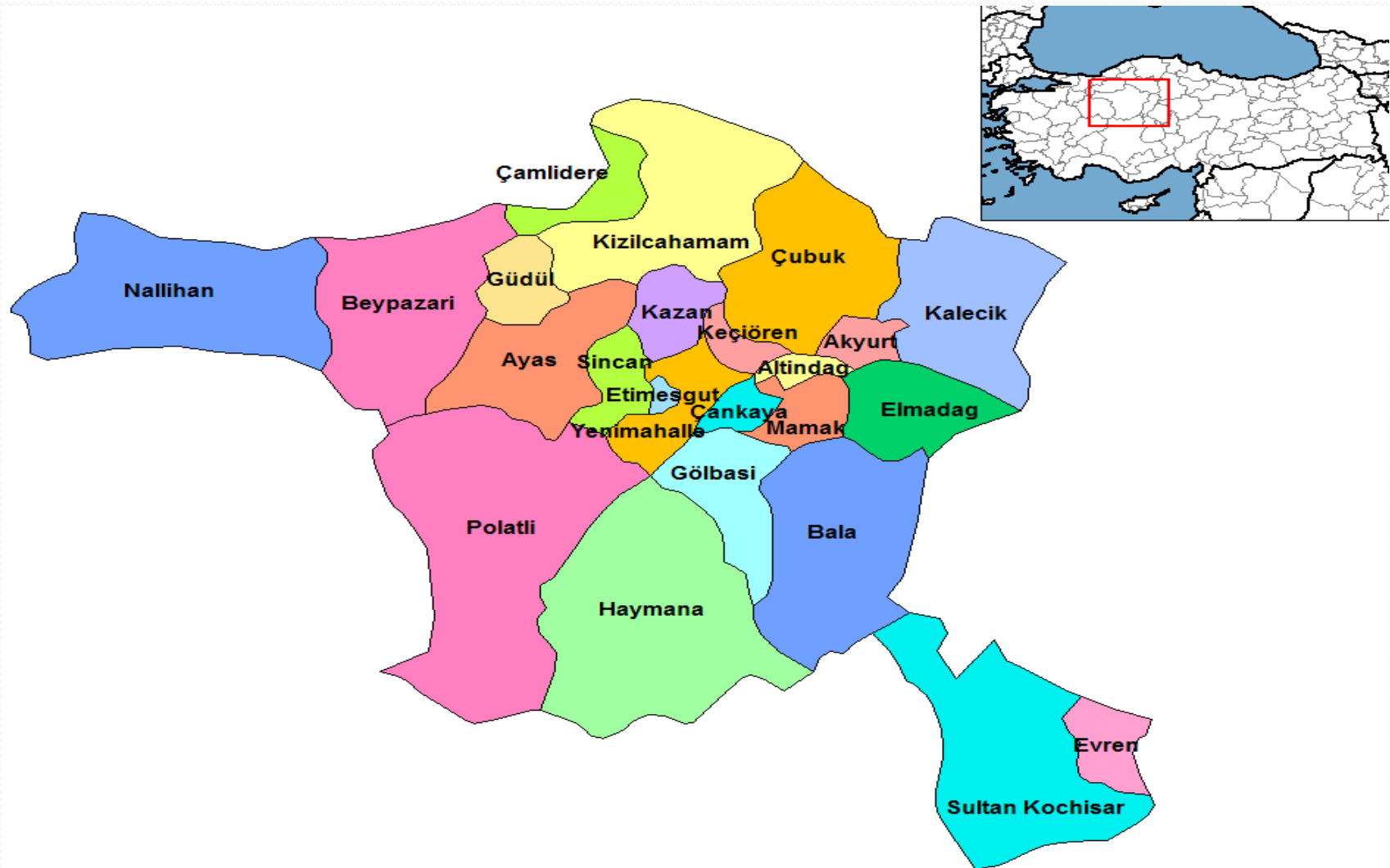
Ankara Directorate of National Education (AMEM) is the second biggest local authority after Ministry of Education across 81 provinces in Turkey.





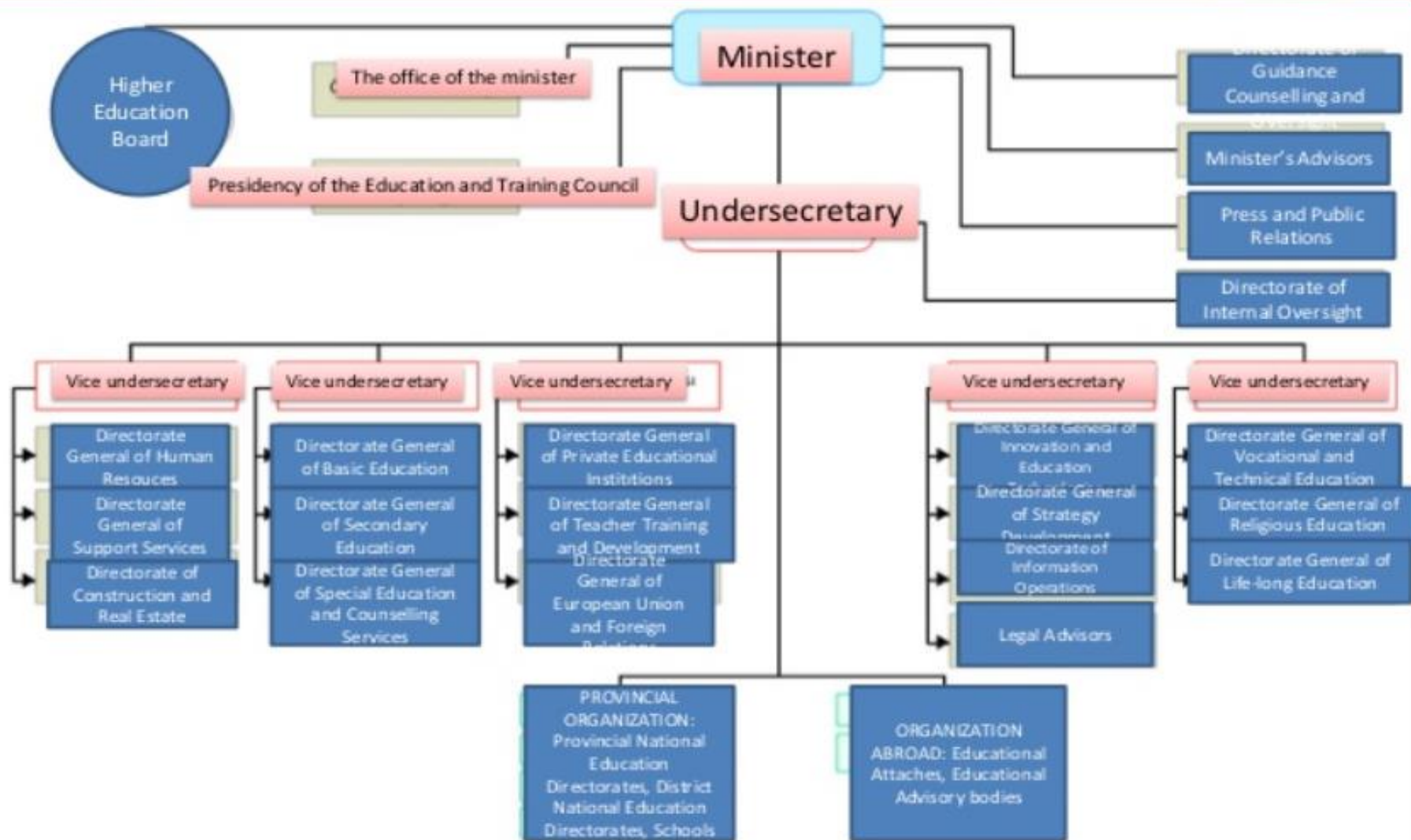
Ankara Directorate of National Education (AMEM) is responsible for the planning, coordination and management of all kinds of educational and training activities for pre-primary, primary, secondary, vocational, technical, SEN schools and adult education in 25 districts of Ankara.

Our main aim is the coordination between District Directorates (25) and Ministry of National Education.





MoNE ORGANIZATIONAL CHART



Ministry of National Education



Ankara Directorate of National Education

Central Organization

Departments (24)

Research And Development Unit

Research Unit

Statistics Unit

Strategic Planning Unit

Natinal Projects Unit

International Projects Unit

25 District Education
Directorates

Pre-primary Schools

Primary Schools

Secondary Schools

Vocational and Technical Schools




SEN Schools

Public Education Centers

There are 953.149 pupils and 67.969 teachers in 2.654 schools in total in Ankara.



Number of students in Ankara and in its 25 districts

Type Of Schools			Total 
Pre-primary Schools	36.771	33.202	69.973
Primary Schools	161.308	152.227	313.535
Secondary Schools	147.628	139.768	287.396
High Schools	142.436	141.490	283.926

We are in charge of Special Education (SEN) Schools and Institutions. We have schools for physically disabled, visually, hearing and mentally impaired students.



We have schools for refugees in Ankara ,too. There are 5 (Five) Temporary Training Centers (G.E.M.) which are specially active for Syrian/ refugee students in the province of Altındağ where Syrian families live intensively. The number of the students are 2696 .





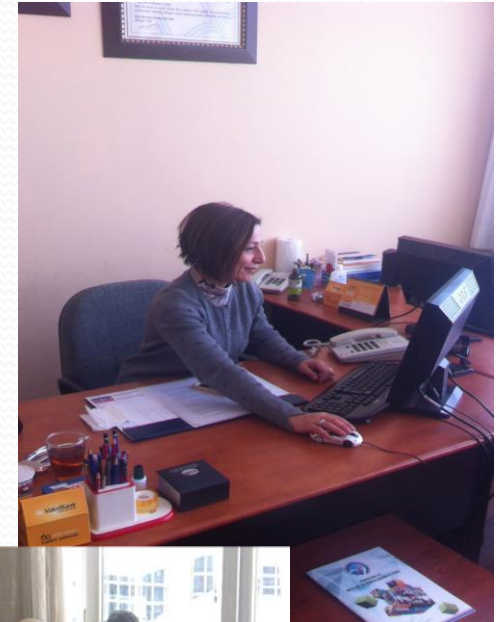
* We have literacy, Turkish and vocational courses for adult immigrants/ refugees (Syrians, Iraqi and Afghans) at Public Education Centers.



Research and Development Unit

AMEM has a research and development unit which;

- determines the problems and education needs of our schools,
- collects data about schools, students, teachers , educational needs and problems ect.
- analyses the data and report it to authorities,
- prepares strategic plans ,
- writes and implements national and international projects.



We run many EU Projects ;
ERAMUS+ KA1, KA2 and KA3



TÜRKİYE CUMHURİYETİ
AVRUPA BİRLİĞİ BAKANLIĞI



REPUBLIC OF TURKEY
MINISTRY FOR EU AFFAIRS



Erasmus+



TÜRKİYE ULUSAL AJANSI
TURKISH NATIONAL AGENCY



AMEM is in charge of 436 state and private independent pre-primary schools in Ankara.



2016-2017 ÖĞRETİM YILI OKULÖNCESİ (RESMİ+ÖZEL) 2016-2017 EDUCATION YEAR PRE-PRIMARY
(STATE+PRIVATE)

İLÇE ADI	KURUM SAYISI Independent kindergarten	ANASINIFI OLAN KURUM SAYISI	ŞUBE SAYISI	DERSLİK SAYISI	ÖĞRENCİ SAYISI			ÖĞRETMEN SAYISI (KADROLU)		
					ERKEK	KIZ	TOPLAM	ERKEK	BAYAN	TOPLAM
AKYURT	2	12	28	26	252	247	499	1	35	36
ALTINDAĞ	19	70	220	173	2.077	1.790	3.867	13	289	302
AYAŞ	2	6	11	13	69	59	128	1	15	16
BALA	1	6	7	9	51	36	87	0	16	16
BEYPAZARI	5	16	49	44	398	371	769	0	57	57
ÇAMLIDERE	0	1	2	4	15	15	30	0	2	2
ÇANKAYA	121	166	813	996	6.181	5.671	11.852	14	1.011	1.025
ÇUBUK	6	19	77	79	685	644	1.329	2	71	73
ELMADAĞ	2	17	37	28	310	301	611	2	44	46
ETİMESGUT	60	79	529	497	4.649	4.247	8.896	10	595	605
EVREN	0	1	1	1	7	6	13	0	3	3
GÖLBAŞI	12	36	157	157	1.378	1.185	2.563	6	211	217
GÜDÜL	0	4	4	6	34	31	65	0	7	7
HAYMANA	1	10	15	15	106	92	198	0	24	24
KAHRAMANKAZAN	4	14	46	35	443	362	805	0	54	54
KALECİK	1	4	10	15	49	43	92	0	18	18
KEÇİÖREN	63	108	679	601	6.025	5.551	11.576	8	716	724
KIZILCAHAMAM	2	6	14	15	103	84	187	1	20	21
MAMAK	24	95	365	252	3.475	3.188	6.663	10	381	391
NALLIHAN	2	9	23	18	194	196	390	1	31	32
POLATLI	7	34	104	82	969	813	1.782	1	122	123
PURSAKLAR	14	17	104	86	958	776	1.734	2	93	95
SİNCAN	18	71	341	230	3.313	2.943	6.256	8	365	373
ŞEREFLİKOÇHİSAR	2	15	30	28	224	225	449	1	43	44
YENİMAHALLE	68	106	570	574	4.806	4.326	9.132	12	596	608
TOPLAM	436	922	4.236	3.984	36.771	33.202	69.973	93	4.819	4.912

What are our responsibilities in this project?

- Identification of the pilot schools required for the studies and getting the official permits to work at these schools
- Getting official permission to observe the teachers in the classroom.
- Contribution to the field study
- Providing logistical support for fieldwork
- Contributing to pilot trainings to pre-school teachers
- Participation in trainings abroad
- Participation in project management meetings
- Participation in dissemination meetings to disseminate project results



6 independent pre-primary schools are chosen to work with the teachers on this projects

- 1. Toki Göksu Anaokulu - Etimesgut
- <http://tokigoksuaokulu.meb.k12.tr/>
- 2. Şehit Tevfik Akkan Anaokulu- Etimesgut (eski Türkkonut Yaprak Anaokulu)
- <http://turkkonutyaprakanaokulu.meb.k12.tr/tema/index.php>
- 3. Fahri Çaldağ Anaokulu - Dikmen
- <http://fahricaldag.meb.k12.tr/>
- 4. Kezban Mercan Anaokulu- Çayyolu
- <http://kezbanmercan.meb.k12.tr/tema/iletisim.php>
- 5. Yeşilevler Anaokulu- Karşıyaka-Yenimahalle
- <http://yesilevleranaokulu.meb.k12.tr/>
- 6. İsmet Kurtuluş İlkokulu- Yenimahalle
- <http://ismetkurtulusio.meb.k12.tr/>

Schools and Teachers Lists

FAHRİ ÇALDAĞ ANAOKULU

İSMET KURTULUŞ İLKOKULU- YENİMAHALLE

Özlem AĞIR	Okul Müdürü
Esra ERSOY	Müdür Yardımcısı
Müesser Filiz GÜNKUT	Rehber Öğretmen
Zuhal SEVİM	Öğretmen
Gülistan DUMAN TUNAY	Öğretmen
Nazan GÜLER	Öğretmen
Nihal ÖZTÜRK	Öğretmen
Leyla ANIK	Öğretmen
Gülay AKBULUT	Öğretmen
Bilgen Burcu ALTUNSOY	Öğretmen
Ayşe SARGIN	Öğretmen
Melike CİRİTCİOĞLU	Öğretmen

- Özgür Yamak: Müdür
Rifat Şahin: Md. Yardımcısı
Suna Avşar: Okul Öncesi Öğretmeni

KEZBAN MERCAN ANAOKULU

- Okul Müdürü
Ezgi TEKİN :
- Müdür Yardımcısı
Süreyya OKUYUCU :
- Okul Öncesi öğretmen
Duygu ÖZCAN :
- Okul Öncesi öğretmen
Seyhan AYDIN :
- Okul Öncesi öğretmen
Nesrin KEÇELİOĞLU :
- Okul Öncesi öğretmen
Mürvet Talihe Gül YENİ :
- Okul Öncesi öğretmen
Mehtap ÇAVUŞ :

TOKİ GÖKSU ANAOKULU PERSONEL LİSTESİ

ADI SOYADI		GÖREVİ
Ö.Özlem Gökbulut		Okul Müdürü
Nilgün YEŞİLTAS		Müdür Yardımcısı
Dilan Özdemir		Öğretmen
Zeynep Yılmaz		Öğretmen
Yasemin Mudu		Öğretmen
Deniz Seçil Atman		Öğretmen
Gülay Seyhan		Öğretmen
Gülcihan Çevik		Öğretmen
Azize Çöl		Öğretmen
Necibe Ayhan		Öğretmen
İlkay CAN		Öğretmen
AYFER HANCI		Öğretmen
Zekine AKDAŞ		Öğretmen
AYŞE PEKER		Öğretmen
İnan ARIKAN		Rehberlik

YEŞİLEVER ANAOKULU

ARZU	KUYANÇ	Öğretmen
DEMET	YASA	
DENİZ SULTAN	ŞAHBAZ	
GÜLCAN	ATAK KARTAL	
İLKNUR ŞULE	AĞAR	
KENAN	AKKURT	
MEHTAP	SAYIN	
MÜJGAN	VELİDEDEOĞLU	
MÜZEHHER	AKŞİT	MÜDÜR YARDIMCISI
NAZMİYE	TAŞYARAN	
NEZİHE	BEKTAŞ	
RAİFE	ŞAHİN	
ŞAHİN	MEDETOĞULLARI	OKUL MÜDÜRÜ
ŞENİZ	KURT	
ZEYNEP	ASLIKARA	

ŞEHİT TEVHİT AKKAN ANAOKULU-ETİMESGUT





Thank you for attention!